

# MH Series



*The MH Series vertical stack offers an innovative, labor-saving solution for spaces where individual, quiet control of the heating and cooling system is important. Using R454B refrigerant, the MH Series vertical stack not only protects the environment, it does so while delivering unprecedented comfort, efficiency, and reliability.*

## STANDARD FEATURES

- 009 (3/4 ton) through 036 (3 tons)
- 208/230 1ph or 265 1ph voltage
- 1" Filters
- Removable chassis
- Double isolation compressor mounting
- PSC fan motor
- Cabinet can slide over riser ball valve
- Communicating CXM2 controls
- Eight standard safeties
- Tin plated coils
- Coaxial heat exchanger
- Field configuration of multiple discharge air and riser knock outs

## UPGRADE OPTIONS

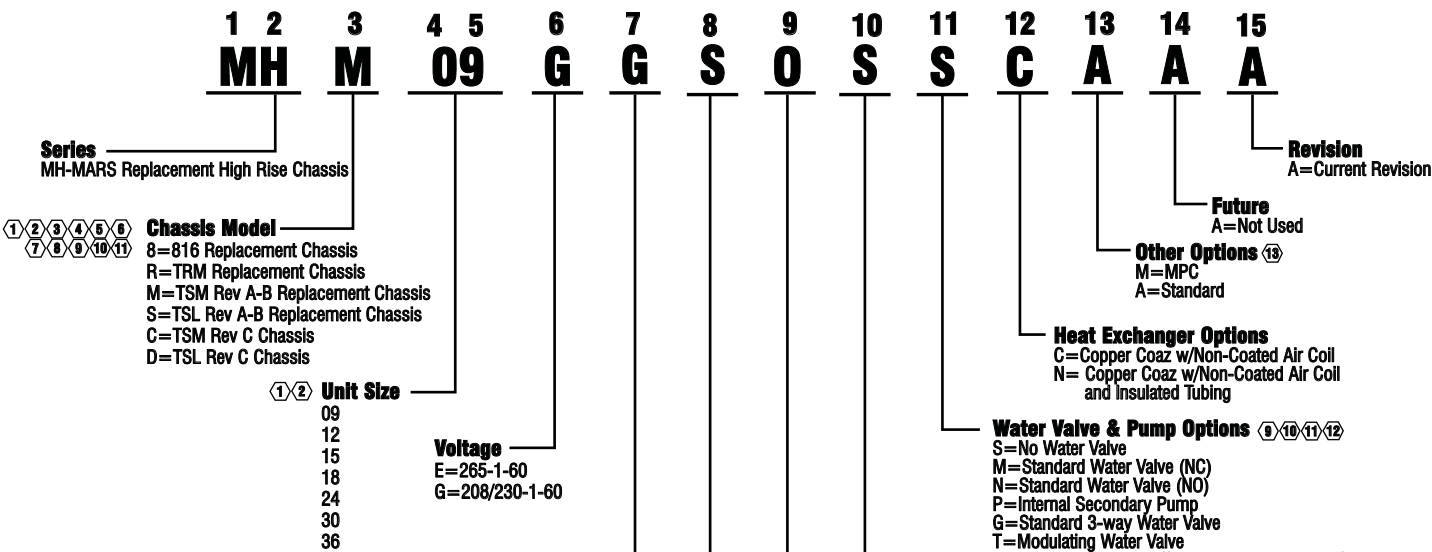
- Choice of unit, ADA, or remote mounted thermostat
- Intelligent communicating DXM2.5 controls for maximized airflow control when paired with CV ECMs
- Constant Volume (CV) or Constant Torque (CT) ECM fan motors
- BACnet, Modbus and Johnson N2 compatibility options for DDC controls
- Stainless steel drain pan
- 2" Filters
- Power disconnect switch or breaker
- Factory configured discharge air with optional dust cover(s)
- Internally mounted motorized water valves and auto flow regulators
- Integrated power disconnect
- Ultra-Quiet sound attenuation package
- Modulating motorized water valve
- Internal 200 PSI load matching pump
- Riser options for sweat or crimped connections
- Hinged or flush mounted return air panel

## VERTICAL STACKS

*Models MH09 - 36 60Hz - R454B*



MODEL NUMBER GUIDE



CONTROLS AND MOTORS				
MOTOR	PSC	EC CT	EC CV	N/A
24V Controls	-	-	-	A
Electro-mechanical Controls	-	-	-	B
Line Voltage Controls	-	-	-	C
CXM2 Controls	D	F	-	-
DXM2 Controls	E	G	J	-

3 4 5 6 10 13

OPTION	S.S. DRAIN PAN	MUTE
S	-	-
A	X	-
1	-	X
2	X	X

CONTROLS OPTIONS			
	RA SEN- SOR	COMM STAT	RIB RELAY
S	-	-	-
A	X	-	-
B	-	X	-
C	-	-	X
D	-	X	X

AUTO-FLOW REGULATOR (US GPM) CODE							
GPM	09	12	15	18	24	30	36
O	NO FLOW REGULATOR						
C	1.5						
D	2.0						
E	2.5						
F		3.0					
G		3.5					
H			4.0				
I				5.0			
J					6.0		
K						7.0	
L							8.0
M							9.0
N							10.5

Notes:

- If digit 3 = "S11 or "M" then digit 4, 5 = "09" or "12" only.
- If digit3 = "8" then digit 4, 5 cannot equal "15".
- If digit 3 = "R" then digit 7 = "A".
- If digit 3 = 8 then digit 7 = "A", "B", or "C".
- If digit 3 = "M" or "S11 then digit 7 = "D", "E", "J".
- If digit 3 = "C" or "D" then digit 7 = "D", "E", "F", "G", or "J".
- If digit3 = "8" or "R" then digit 10="8" or "A".
- If digit 3 = "M", "S", "C", "D", then digit 10 = 11S11, "B", "C", or "D".
- If digit 11 = "G" then digit 3 = "C" or 11D".
- If digit 11 = "T" then digit 7 = "E", "G", or "J" and digit 3 = "C" or "D".
- If digit 11 = "H", "J", "L", then digit3 = "D".
- If digit 11 = "P" or "T" then digit 9 = "0".
- If digit 13 = "M" then digit 7 = "D", "F", "E", "G", or "J".





## TESTED TO ASHRAE/AHRI/ISO 13256-1 ENGLISH (I-P) UNITS

Model with ECM Motor	Water Loop Heat Pump				Ground Loop Heat Pump			
	Cooling 86°F		Heating 68°F		Cooling 77°F		Heating 32°F	
	Capacity Btuh	EER Btuh/W	Capacity Btuh	COP	Capacity Btuh	EER Btuh/W	Capacity Btuh	COP
<b>MHM09</b>	9200	14.3	12200	5.4	9700	16.2	7100	3.3
<b>MHM12</b>	11800	14.1	15200	5.3	12100	16.8	9000	3.2
<b>MHM15</b>	14600	15.9	17500	5.3	15500	18.8	11000	3.6
<b>MHM18</b>	18000	15.2	22200	5.1	18500	17.3	13200	3.3
<b>MHM24</b>	25000	15.7	32500	5.1	26500	18.5	18200	3.5
<b>MHM30</b>	28000	15.1	34500	5.0	29000	17.6	22200	3.6
<b>MHM36</b>	35000	14.6	40500	5.0	36000	16.5	25500	3.5

Cooling capacities based upon 80.6°F DB, 66.2°F WB entering air temperature.

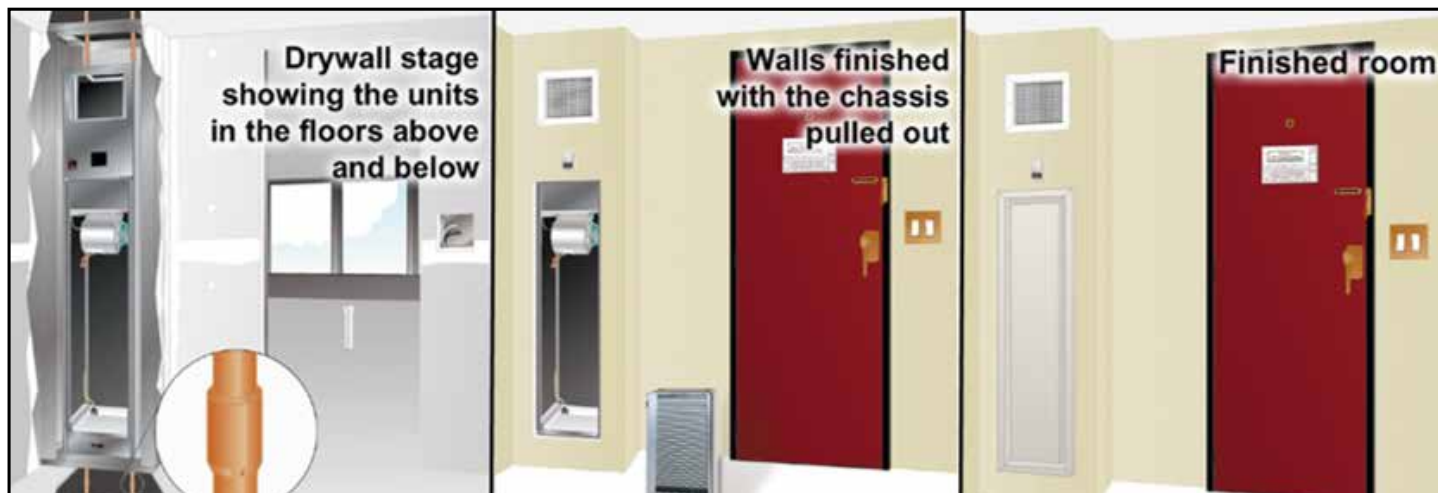
Heating capacities based upon 68°F DB, 59°F WB entering air temperature. All ratings based upon operation at lower voltage of dual voltage rated models.

## UNIT SIZE

Model	W*	D*	H**
09 - 12	17.0	17.0	88.0
15 - 18	19.25	19.0	88.0
24 - 36	24.0	24.0	88.0

\* Not Including Riser

\*\* Optional 80" Cabinet





## VERTICAL STACKS

*Models MH09 - 36 60Hz - R454B*



"This product complies with all California product labeling laws including, but not limited to, the Safe Drinking Water and Toxic Enforcement Act of 1986, more commonly known as Proposition 65."

*Due to ongoing product improvements, specifications and dimensions are subject to change and correction without notice or incurring obligations. Determining the application and suitability for use of any product is the responsibility of the installer. Additionally, the installer is responsible for verifying dimensional data on the actual product prior to beginning any installation preparations.*

*Third party incentive and rebate programs have precise requirements as to product performance and certification. All products meet applicable regulations in effect on date of manufacture; however, certifications are not necessarily granted for the life of a product. Therefore, it is the responsibility of the applicant to determine whether a specific model qualifies for these incentive/rebate programs.*