



1900 Wellworth Ave. • Jackson, MI 49203  
517-787-2100

# Submittal Data

CMA1412SG-0

Project Name:	
Location:	
Engineer:	
Submitted to:	
Submitted by:	
Reference:	

Approval:	
Date:	
Construction:	
Unit #:	
Drawing #:	

### Performance Data

Power supply	Ph-V-Hz	
<b><u>Cooling</u></b>		
Capacity	Btu/h	11,800
Input	W	970
Rated current	A	9
EER	Btu/w	12.2
SEER	Btu/w	14.5
MINIMUM CIRCUIT AMPACI	A	11
MAX.FUSE	A	15

### Compressor Electrical

Model	ASM100E11VEZ	
Type	ROTARY	
Brand	GMCC	
Capacity	Btu/h	11600
Input	W	800
Rated current(RLA)	A	7.5
Coil Treatment	/	
Thermal protector position	Internal	
Connection wiring	18ga 2 Conductor	

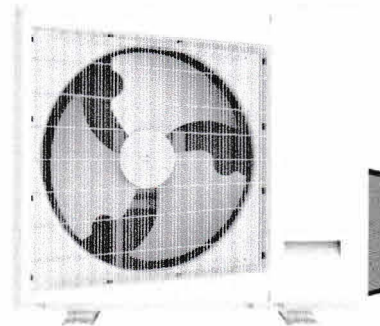
### Air Flow & Noise Level

Outdoor air flow	CFM	1470
Outdoor noise level	dB(A)	54

**Thermostat type** Standard 24v Control

### Fan Motor

Model	YDK-35-6H	
Brand	Lvzhi	
Input	W	80.2
RLA	A	0.75
LRA	A	0.87
Winding Resistance	Ω	52.5/107.1
Capacitor	uF	8
Speed	r/min	910



### Ambient Temperature

Outdoor(cooling) Deg. F 65-109

### System Operational Data

Design pressure	PSIG	Hi (540) Lo(300)
Refrigerant oil/oil charge	ml	300
Refrigerant type/charge	oz	49.38
Refrigerant precharge	g	1400
Additional charge per ft.	oz	0.16
Liquid side/ Gas side	in	1/4" / 1/2"
Max. length	ft	82
Max. height difference	ft	33

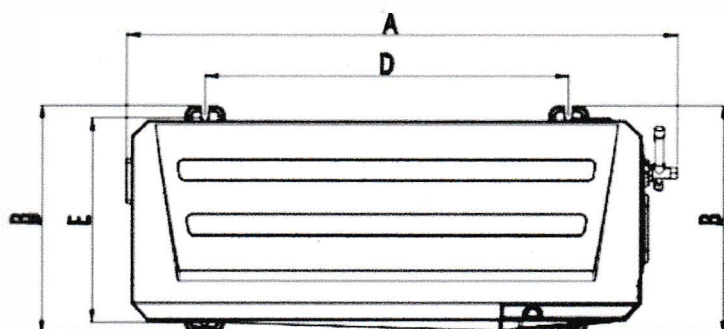
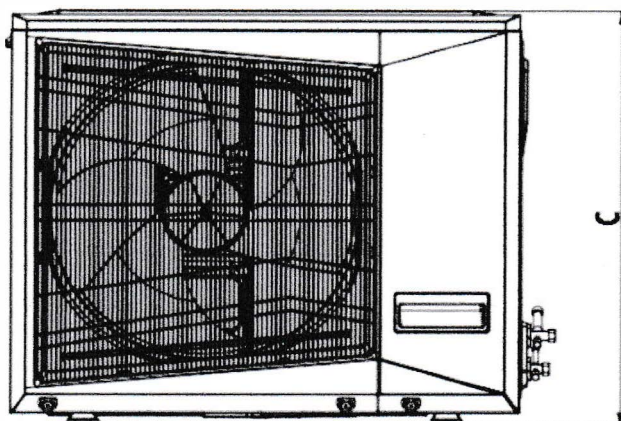
### Dimensional Data

Dimension(W*D*H)	inch	33.5x13.6x21.9
Packing (W*D*H)	inch	36.0x15.0x24.0
Net/Gross weight	lbs.	91.5/99.2

# CMA14--SG

## Accessories

83907	Surge Protection
83916	Disconnect with internal surge
83335	60 amp Unfused Disconnect
93642	Bracket
93540	Condenser Pad



Model	A	B	C	D	E
12K	33.5	13.6	21.9	20.0	11.0

**Where TXV's are necessary due to AHRI-Match or performance-related applications, a minimum 15% bleed-type TXV is required.**

**Bleed-Style TXV's** for use with CMA14-SERIES and Comfort-Aire Coils/Air Handlers:

- **67304001** TXV for use with **CMA14 1.0T – 3.0T**
  - (C,M)CG\*P Coils
  - HMG/HCG Air Handlers
- **67304002** TXV for use with **CMA14 4.0T**
  - (C,M)CG\*P Coils
  - HMG/HCG Air Handlers
- **4203** TXV for use with **CMA14 1.5T – 3.0T**
  - (C,M)CG\*M Coils
  - HWCG Hydronic Air Handlers
- **4204** TXV for use with **CMA14 4.0T**
  - (C,M)CG\*M Coils
  - HWCG Hydronic Air Handlers